

SECTION A - A

CODE	REV	VER	ZONE	DESCRIPTION OF REVISION(S)	DATE/CN	BY
M	D2	-	A-10	ADDED ITEM # 6	03/27/07	GC
-	D1	-	A-1	ADDED NOTE # 6	10805	-
-	-	-	-	-	27576	HC
M	C3	2	R-10	ADD TABLE FOR CROSS REFERENCE P/Ns	07/05/06	ER
-	-	-	-	-	57255	JCG
M	C2	1	A-10	741-79895-T WAS 741-79845-T	04/21/06	GC
-	C1	-	A-10	741-79378 WAS 741-75259	57128	JCG
R	B1	1	A-10	ITEM -4 WAS Z741-79413	01/04/05	JMU
-	-	-	-	-	56535	EJ
R	A	1	-	PRODUCTION RELEASE	04/30/04	EM
-	-	-	-	PN CHANGE WAS: Z741-79232	56029	EJ

2

<p>QUALITY SYMBOL DEFINITIONS</p> <p> CRITICAL DESIGN MAJOR HIGHLIGHT PARAMETER THESE QUALITY SYMBOLS SHALL BE INTERPRETED PER THE LATEST REVISION OF THE SUPPLIER QUALITY REQUIREMENTS. </p>	<p>DESIGNED BY E. MATTSON</p> <p>DATE 04/30/04</p>	<p>DELPHI MECHATRONIC SYSTEMS 3110 Woodcreek Dr. Downers Grove, Illinois 60515-5426</p>	
	<p>DRAFTED BY E. MATTSON</p> <p>DATE 04/30/04</p>		
<p>METRIC ALL DIMENSIONS ARE SPECIFIED IN MILLIMETERS UNLESS OTHERWISE SPECIFIED.</p> <p>TOLERANCES UNLESS OTHERWISE SPECIFIED 1 PLACE DECIMAL 0.0 ± 0.26 MM 2 PLACE DECIMAL 0.00 ± 0.13 MM ALL ANGLES 00 ± 1°</p> <p> THIRD ANGLE PROJECTION</p>	<p>CHECKED BY E. MATTSON</p> <p>DATE 04/30/04</p>	DRAWING TITLE	
	<p>DESIGN APPROVED BY E. MATTSON</p> <p>DATE 04/30/04</p>	ASSEMBLY - IGNITION SWITCH	
<p>NOTICE TO PERSONS RECEIVING THIS DRAWING AND/OR TECHNICAL INFORMATION DELPHI MECHATRONIC SYSTEMS CLAIMS PROPRIETARY RIGHTS TO THE MATERIAL DISCLOSED HEREON. THIS DRAWING AND/OR TECHNICAL INFORMATION IS ISSUED IN CONFIDENCE FOR ENGINEERING INFORMATION ONLY AND MAY NOT BE REPRODUCED OR USED TO MANUFACTURE ANYTHING SHOWN OR REFERRED TO HEREIN WITHOUT DIRECT WRITTEN PERMISSION FROM DELPHI MECHATRONIC SYSTEMS TO THE USER. THIS DRAWING AND/OR TECHNICAL INFORMATION IS THE PROPERTY OF DELPHI MECHATRONIC SYSTEMS AND IS LOANED FOR MUTUAL ASSISTANCE, TO BE RETURNED WHEN ITS PURPOSE HAS BEEN SERVED.</p>	<p>ENGINEERING APPROVED BY E. MATTSON</p> <p>DATE 04/30/04</p>	SIZE D	MATERIAL SEE NOTES
	<p>CAD RELEASED BY E. JOURDAN</p> <p>DATE 04/30/04</p>	EXPERIMENTAL NUMBER Z741-79232-MX	
<p>ADDED DRAWING AL CHANGES</p>	<p>CHANGE NOTICE 56029</p> <p>DATE 04/30/04</p>	DRAWING NUMBER	
	<p>DO NOT SCALE THIS DRAWING</p> <p>DRAWING SCALE 2:1</p>	<p>741-76307-T</p> <p>SHEET 1 OF 1</p>	
REV		D	

N

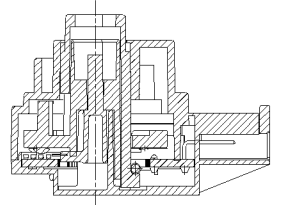
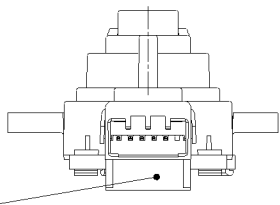
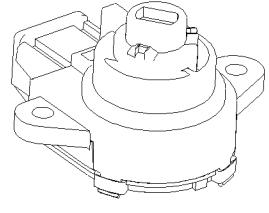
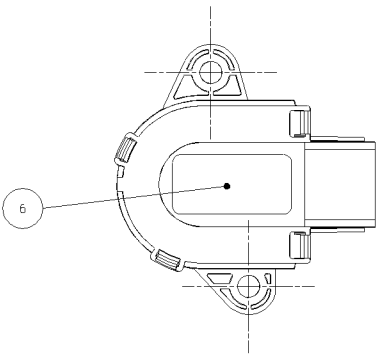
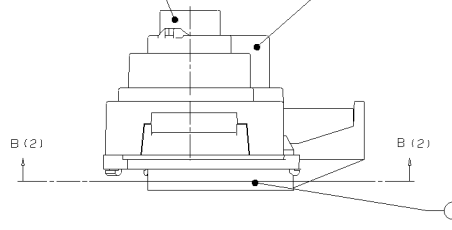
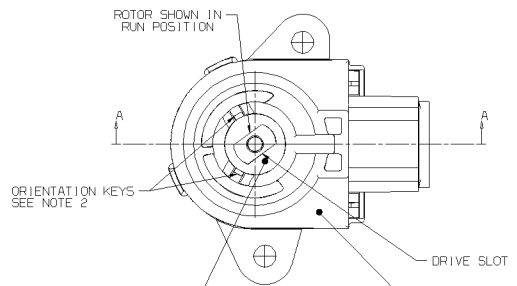
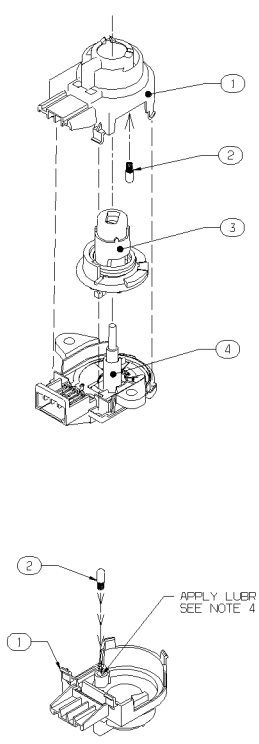
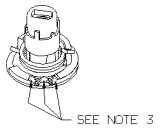
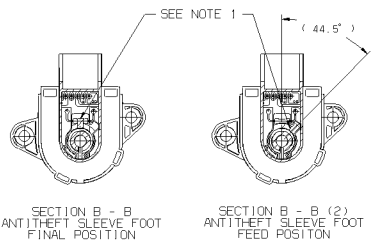
P

CAD DATABASE FILENAME: 741-76307-mx-t_d

ITEM	PART NUMBER	DESCRIPTION	QTY
1	2741-79255-1	COVER	1
2	741-79376	ASSEMBLY - DETENT PLUNGER	1
3	2741-79414	ASSEMBLY - ROTOR SPRING ANTI-THIEF SLEEVE & CONTACT PLATES	1
4	741-79895-1	ASSEMBLY - BASE	1
5	MS-76255	LUBRICANT	A R
6	20106623	LABEL ID	1

ASSEMBLY-IGN. SW	ASSEMBLY-BASE
741-79896-1	741-79895-1
741-79896-2	741-79895-2
741-79896-3	741-79895-3
741-79896-4	741-79895-4
741-79896-5	741-79895-5
741-79896-6	741-79895-6
741-79896-7	741-79895-7
741-79896-8	741-79895-8
741-79896-9	741-79895-9
741-79896-10	741-79895-10

TABLE 1



- NOTES:
- ASSEMBLE ROTOR (ITEM 3) TO BASE (ITEM 4); ALIGN DRIVE SLOTS ON ROTOR AND ANTI-THIEF SLEEVE. ASSEMBLY TOOL MUST MAINTAIN ROTOR TO ANTI-THIEF SLEEVE DRIVE SLOT ALIGNMENT. FEED ANTI-THIEF SLEEVE FOOT THROUGH SLOT IN PC BOARD. ROTATE ANTI-THIEF SLEEVE AND ROTOR TO POSITION FOOT UNDER RESISTOR. ASSEMBLY IS NOW IN "RUN" POSITION.
 - INDEX ORIENTATION KEYS (2 PLACES) ON ANTI-THIEF SLEEVE TO SLOTS IN COVER BEFORE FINAL CLOSING OPERATION.
 - APPLY 0.03/0.05 ML. OF LUBRICANT (ITEM 5) EVENLY OVER AREA SHOWN.
 - APPLY (0.03 ML.) OF LUBRICANT (ITEM 5) TO DETENT PLUNGER GUIDE BORE.
 - ASSEMBLY TO BE SHIPPED IN RUN POSITION.
 - PLACE LABEL ACCORDING TO WORK INSTRUCTION.

REV	DATE	DESCRIPTION OF REVISION(S)	DATE/CHK BY
H	02/27/07	ADDED ITEM # 6	02/27/07 GZ
D1	-	ADDED NOTE # 6	10/05/06 -
-	-	-	07/05/06 HZ
H	03/2	ADD TABLE FOR CROSS REFERENCE P/Ns	07/05/06 EP
-	-	-	07/05/06 JGD
H	02/1	741-79895-1 WAS 741-79845-1	04/27/06 GZ
-	-	741-79376 WAS 741-79099	07/05/06 JGD
P	B1	1704-4 WAS 2741-79413	01/04/05 JAU
-	-	-	06/05/05 EJJ
P	A	PRODUCTION RELEASE	04/20/04 BM
-	-	PC CHANGE W/MS 2741-79252	06/09/04 EJJ

REV	DATE	DESCRIPTION OF REVISION(S)	DATE/CHK BY
E	04/25/04	DESIGN CHANGE	04/25/04
E	04/25/04	DESIGN CHANGE	04/25/04
E	04/25/04	DESIGN CHANGE	04/25/04
E	04/25/04	DESIGN CHANGE	04/25/04
E	04/25/04	DESIGN CHANGE	04/25/04
E	04/25/04	DESIGN CHANGE	04/25/04

CAD DRAWING TO BE USED

741-76307-T SHEET 1 OF 1