




R	A	1	-	PRODUCTION RELEASE	54621	JS
-	-	-	-	-	10/25/01	CM
CODE	REV	VER	ZONE	DESCRIPTION OF REVISION(S)	DATE/EA	BY

QUALITY SYMBOL DEFINITIONS

 CRITICAL
 DESIGN MAJOR
 HIGHLIGHT PARAMETER

THESE QUALITY SYMBOLS SHALL BE INTERPRETED PER THE LATEST REVISION OF THE CONTROLS DIVISION SUPPLIER

DESIGNED BY: J. SPAPPER] DATE: 10/25/01

DRAFTED BY: J. SPAPPER] DATE: 10/25/01



Eaton Corporation
Vehicle Switch
Electronics Division
Downers Grove, Illinois
60515-5426

METRIC ALL DIMENSIONS ARE SPECIFIED IN MILLIMETERS UNLESS OTHERWISE SPECIFIED

TOLERANCES UNLESS OTHERWISE SPECIFIED

3 PLACE DECIMAL 0.0 ± 0.26 MM

2 PLACE DECIMAL 0.00 ± 0.13 MM

ALL ANGLES 00 ± 1°



THIRD ANGLE PROJECTION

CHECKED BY: ERIK MATTSON DATE: 10/25/01

DESIGN APPROVED BY: R. WOJTECKI DATE: 10/25/01

ENGINEERING APPROVED BY: DAVE BARKER DATE: 10/25/01

DRAWING TITLE

DETENT SPRING & PLUNGER

SIZE: **C** MATERIAL: SEE NOTES

EXPERIMENTAL NUMBER: X741-79378

NOTICE TO PERSONS RECEIVING THIS DRAWING AND/OR TECHNICAL INFORMATION

EATON CORPORATION CLAIMS PROPRIETARY RIGHTS TO THE MATERIAL DISCLOSED HEREON. THIS DRAWING AND/OR TECHNICAL INFORMATION IS ISSUED IN CONFIDENCE FOR ENGINEERING INFORMATION ONLY AND MAY NOT BE REPRODUCED OR USED TO MANUFACTURE ANYTHING SHOWN OR REFERRED TO HEREON WITHOUT DIRECT WRITTEN PERMISSION FROM EATON CORPORATION TO THE USER. THIS DRAWING AND/OR TECHNICAL INFORMATION IS THE PROPERTY OF EATON CORPORATION AND IS LOANED FOR MUTUAL ASSISTANCE, TO BE RETURNED WHEN ITS PURPOSE HAS BEEN SERVED.

CAD RELEASED BY: C. MILICI DATE: 10/25/01

ENGINEERING AUTHORIZATION: 54621 DATE: 04/18/01

DO NOT SCALE THIS DRAWING DRAWING SCALE: 2:1

DRAWING NUMBER: 741-75259

SHEET 1 OF 1

REV: A

G

H

CAD DATABASE FILENAME: 741-75259-mx_a

SPRING DIMENSIONAL SPECIFICATIONS

ITEM DESCRIPTION	ITEM #	SPECIFICATION	UNITS
INSIDE DIAMETER MIN.	DJ	1.96±0.05	mm
OUTSIDE DIAMETER MAX. *	DO	2.62	mm
FREE LENGTH	L0	9.6 MAX.	mm
MAXIMUM SOLID LENGTH	LS	4.37	mm
WIRE DIAMETER	DW	0.33	mm

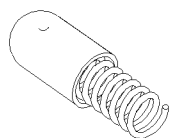
FUNCTIONAL SPECIFICATIONS

ITEM DESCRIPTION	ITEM #	SPECIFICATION	UNITS
LOAD AT HEIGHT L1	F1	2.00±0.20	N
-	-	-	N
DEFLECTION HEIGHT	L1	6.86	mm
-	-	-	mm
SPRING CONSTANT *	K	-	N/mm

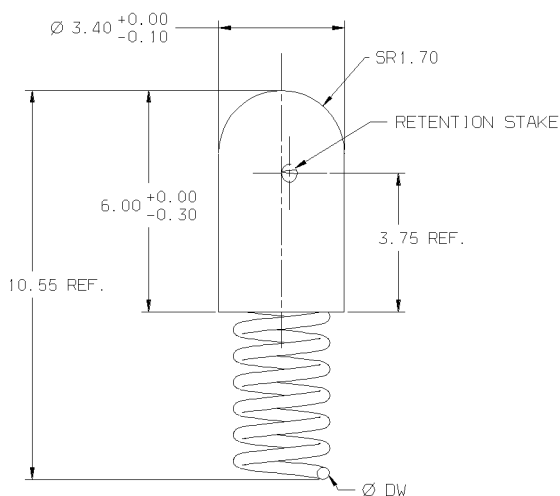
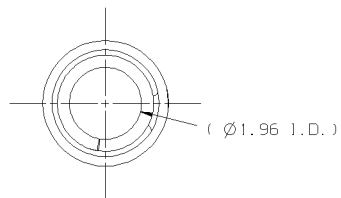
PHYSICAL SPECIFICATIONS (CLOSED / NOT GROUND)

ITEM DESCRIPTION	ITEM #	SPECIFICATION	UNITS
WINDING DIRECTION *		VENDOR OPTION	
TOTAL COILS *	NT	12.0 REF.	
ACTIVE COILS *	NA	10.0 REF.	
PITCH *	P	-	mm
SPRING INDEX *	C	-	
MEAN RADIUS *	RM	-	mm
SPRING MATERIAL		MUSIC WIRE	
END TYPE		CLOSED & SQUARED. NOT GROUND	

* REFERENCE INFORMATION ONLY, DIMENSIONAL TOLERANCE NOT APPLIED



ISOMETRIC VIEW
SCALE 5:1



NOTES:

- CAP MATERIAL: STEEL, WITH NICKEL PLATE

REFERENCE:

R	A	1	-	PRODUCTION RELEASE	54621	JS
CODE	REV	VER	ZONE	DESCRIPTION OF REVISION(S)	DATE/EA	BY

<p>QUALITY SYMBOL DEFINITIONS</p> <p>● CRITICAL ○ DESIGN CHANGED ○ DIMENSIONAL CHANGED</p> <p>THESE QUALITY SYMBOLS SHALL BE INTERPRETED PER THE LATEST REVISION OF THE CONTROLS DIVISION SUPPLIER</p>	<p>DESIGNED BY J. SPAPPERI</p> <p>DRAFTED BY J. SPAPPERI</p> <p>CHECKED BY ERIK MATTSON</p> <p>DESIGN APPROVED BY R. WOJTECKI</p> <p>ENGINEERING APPROVED BY DAVE BARKER</p> <p>CAD RELEASED BY C. MILICI</p>	<p>DATE 10/25/01</p> <p>DATE 10/25/01</p> <p>DATE 10/25/01</p> <p>DATE 10/25/01</p> <p>DATE 10/25/01</p> <p>DATE 10/25/01</p> <p>DATE 10/25/01</p>	<p>EATON Eaton Corporation Vehicle Switches Division Downers Grove, Illinois 60515-5426</p> <p>DRAWING TITLE DETENT SPRING & PLUNGER</p> <p>SIZE C</p> <p>MATERIAL SEE NOTES</p> <p>EXPERIMENTAL NUMBER X741-79378</p> <p>DRAWING NUMBER 741-75259</p> <p>REV A</p>
--	---	--	--

CAD DRAWING
NO MANUAL CHANGES

81.15.121 1002.31.1 HEB01.00 1 TMMH4 ic1111 GM/HEC000003202